



KEHL-SUNDHEIM **EDSK**

Sonderlandeplatz / Special Airfield
1.1 NM SE Kehl a. Rh.
Aero-Club Kehl e.V.
Postfach 1131, 77694 Kehl a. Rh.
NfL I-107/91, I-196/96; NfL I-193/82, I-198/86,
I-295/96

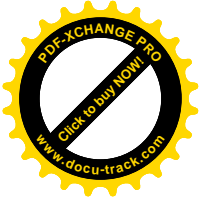
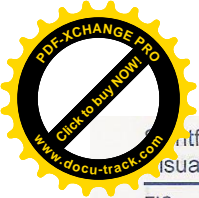
ACFT 1250 kg, GLD (P), GLD, H-GLD, UL,
Modellflugzeuge bis / Model flying up to 20 kg

TIME PPR

OPS ☎ (07851) 5360 am Wochenende / at the
weekend,
PPR ☎ (0177) 7759209 (Huth),
(07851) 484543 (Huth)

APP LFST ☎ (0033) 388596313
(ACC EDGG ☎ (06103) 707 6200)

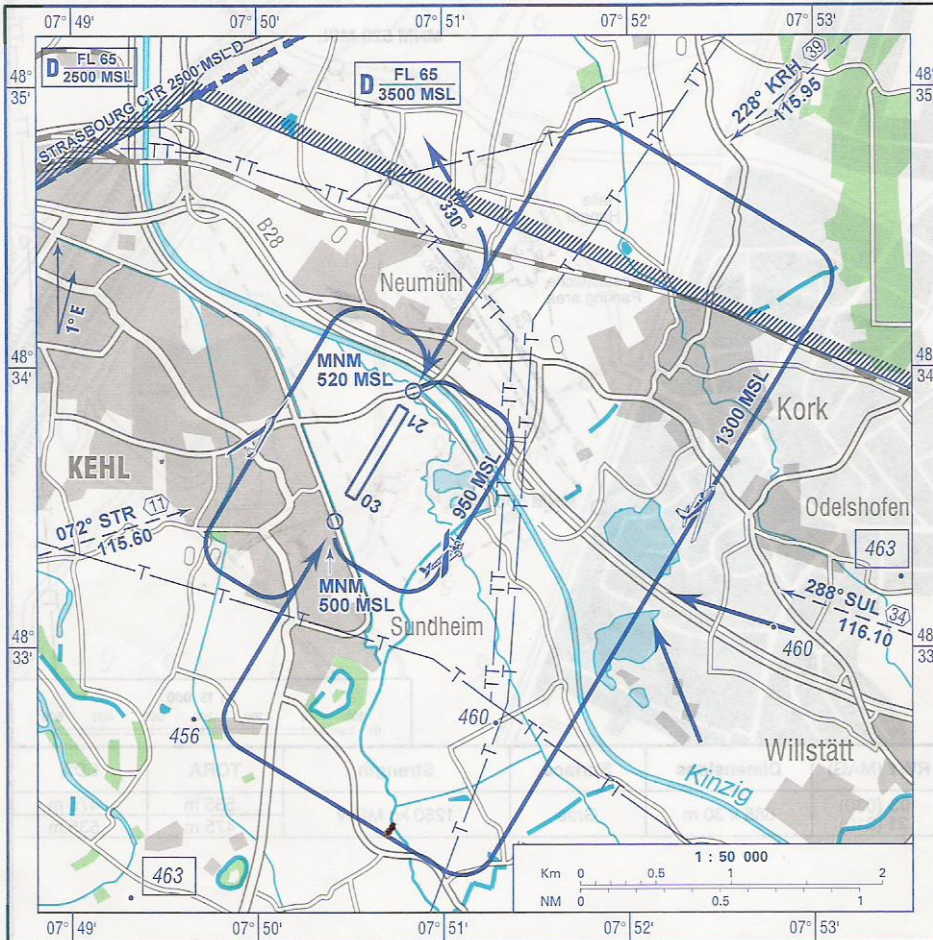
MET ☎ (0900) 1 0 77 22 7 (50)



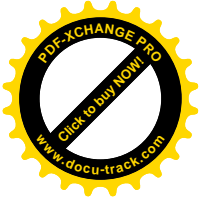
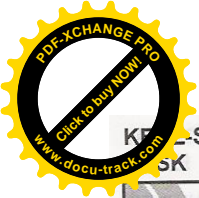
FIS
LANGEN INFORMATION
128.950

KEHL INFO
122.750 Ge (15 NM 3000 ft GND)

Berichtigung: Luftraum D Karlsruhe, Missweisung, Topografie.
Correction: Airspace D Karlsruhe, variation, topo.



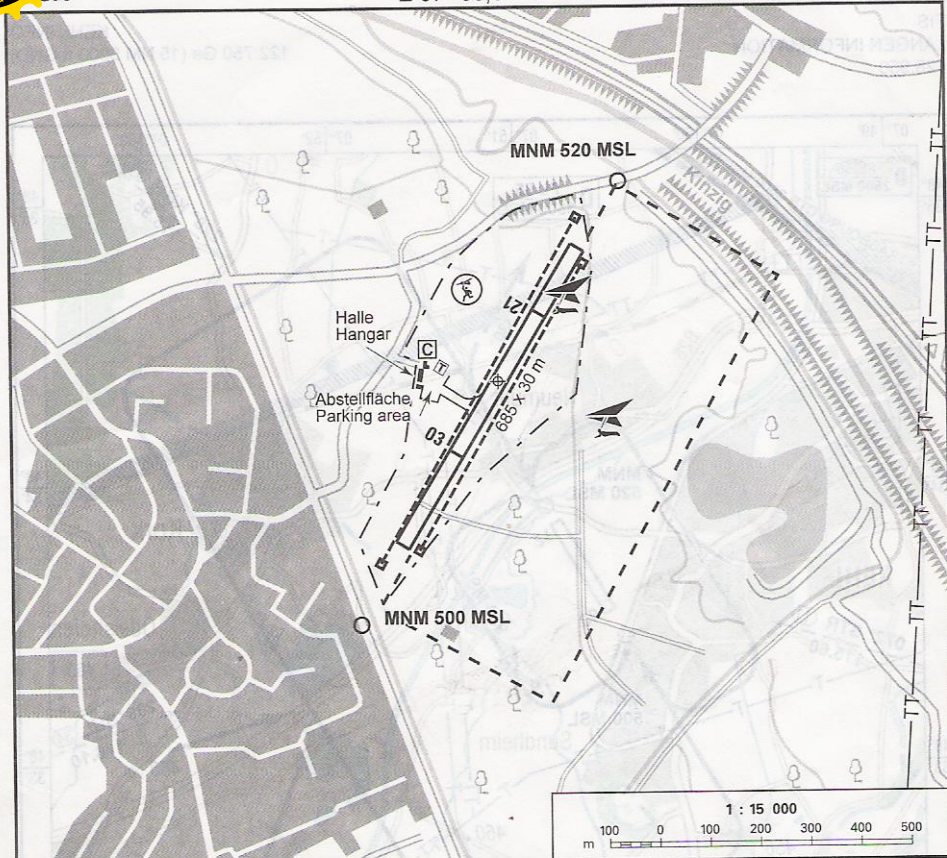
Overflights of the suburbs Kehl-Sundheim, -Neumühl, -Kork and -Odelshofen shall be avoided, if possible, excepted are the eastern parts of Kehl-Neumühl and -Sundheim, located below the approach and departure sectors.



KF -SUNDHEIM
SK

N 48° 33,70'
E 07° 50,64'

Flugplatzkarte
Aerodrome Chart



Correction: urn: urn:

RWY (MAG)	Dimensions	Surface	Strength	TORA	LDA
03 (030) 21 (210)	685 x 30 m	Gras	1250 kg MPW	535 m	475 m
				475 m	535 m

(Faint, mirrored text from the reverse side of the page, likely bleed-through from the German text.)