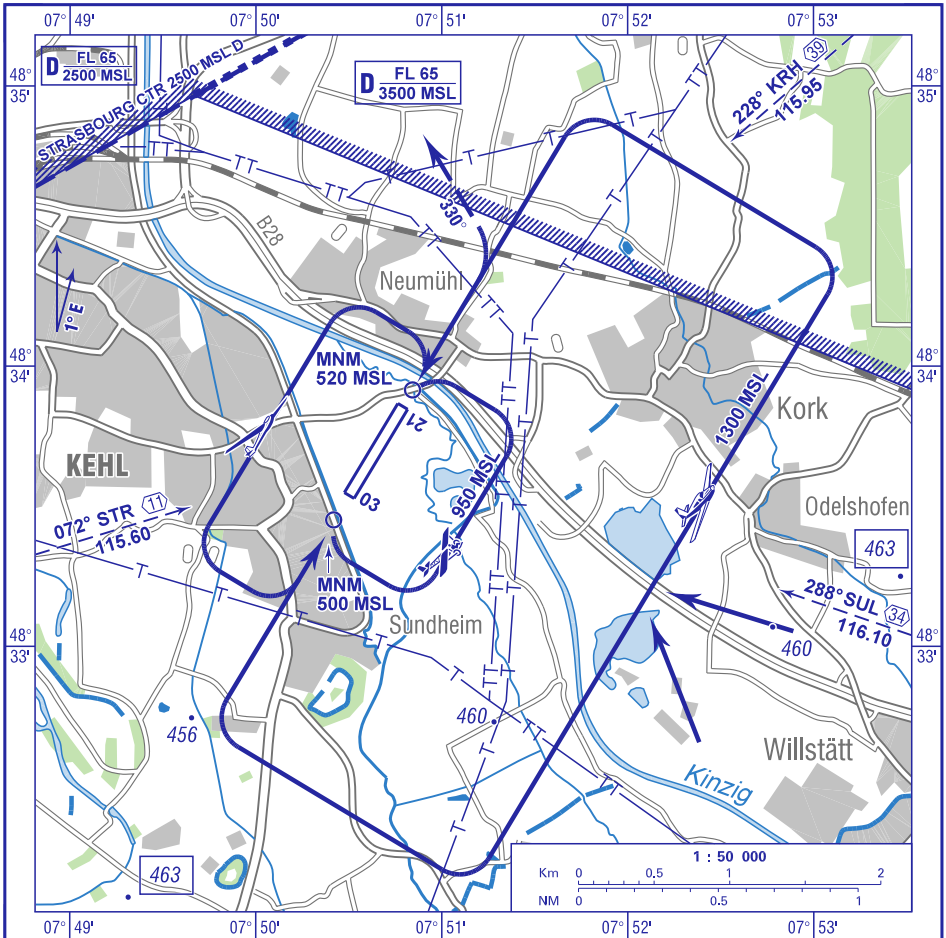


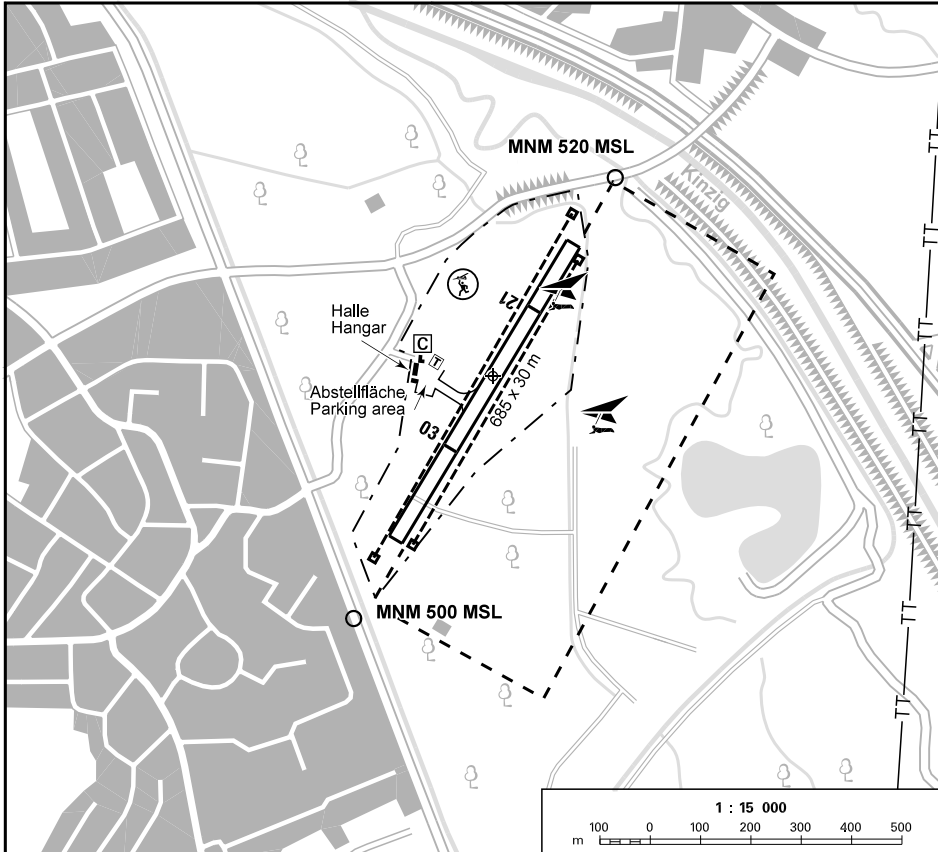
FIS
LANGEN INFORMATION
128.950

KEHL INFO
122.750 Ge (15 NM 3000 ft GND)

Berichtigung: Luftraum D Karlsruhe, Missweisung, Topografie.
Correction: Airspace D Karlsruhe, variation, topo.



Overflights of the suburbs Kehl-Sundheim, -Neumühl, -Kork and -Odelshofen shall be avoided, if possible, excepted are the eastern parts of Kehl-Neumühl and -Sundheim, located below the approach and departure sectors.



Berichtigung: QFU, Topografie.
Correction: QFU, topo.

RWY (MAG)	Dimensions	Surface	Strength	TORA	LDA
03 (030) 21 (210)	685 x 30 m	Gras	1250 kg MPW	535 m	475 m
				475 m	535 m

